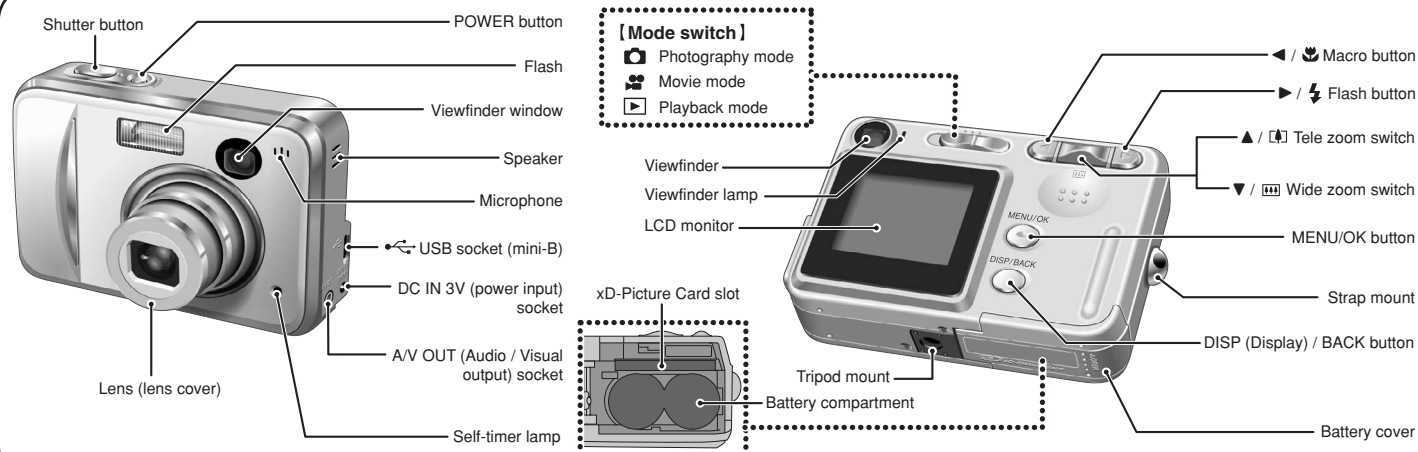


FinePix A345/FinePix A350

Quickstart


FUJIFILM digital

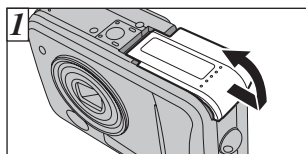
Camera Controls



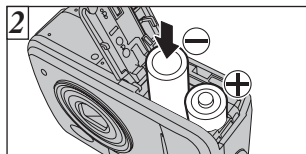
BL00454-200(1) E

Picture Taking

A. Loading the batteries

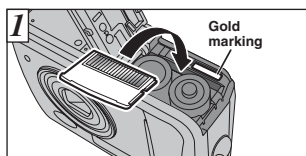


1. Check that the camera is turned off (viewfinder lamp is off) before opening the battery cover.

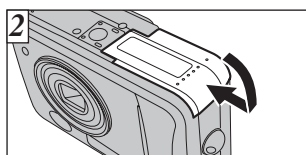


2. Load the batteries correctly as shown left.

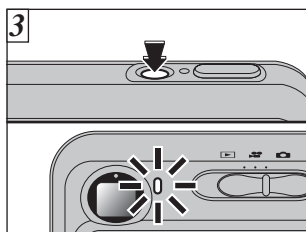
B. Setting up the camera



1. Align the gold marking on the xD-Picture Card slot with the gold contact area on the **xD-Picture Card** and push the card firmly all the way into the slot.

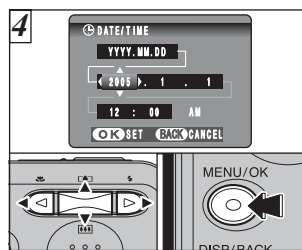


2. Close the battery cover.



3. Press the "POWER" button to turn the camera on. When turning the camera on, the viewfinder lamp lights green.

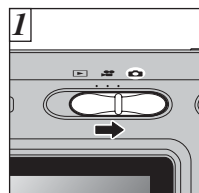
Refer to Owner's Manual for more detailed instructions



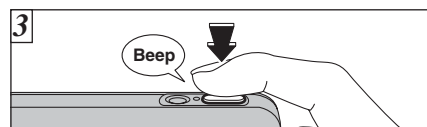
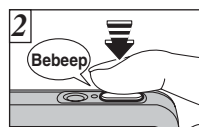
4. You can select your preferred date format. Press "◀" or "▶" to select the date order, Year, Month, Day, Hour or Minute. Press "▲" or "▼" to correct the setting. Press the "MENU/OK" button after you complete the setting.

*Refer to owner's manual for date/time setup.

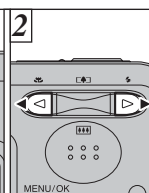
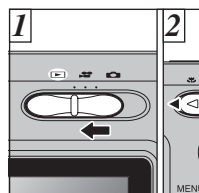
C. Taking a picture



1. Set the Mode switch to "📷".
2. Press the shutter button down half way to adjust the focus.
3. Press the shutter button down fully to take a picture. The camera makes a beeping sound and takes the picture.



D. Viewing a picture



1. Set the Mode switch to "📺".
2. Press the "◀" or "▶" to move through your images.

Still images that can be viewed on the FinePix A345/FinePix A350

You can use this camera to view still images recorded on the FinePix A345/FinePix A350 or still images (excluding some uncompressed images) recorded on a FUJIFILM digital camera that supports **xD-Picture Card**.

Viewing images on your PC



A. Install Software



B. Connect a Camera to PC

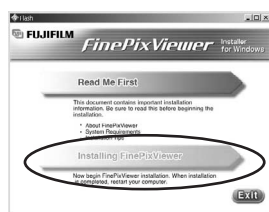
C. Save Images



A. Install Software

Do not connect the camera to your PC until the software installation is completed.

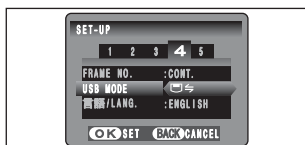
1. Turn on your PC and start up Windows.
Users of Windows 2000 Professional or Windows XP should log in by using a system administrator account (e.g. "Administrator").
2. Quit all other active applications until no applications are shown in the taskbar.
3. Load the enclosed CD-ROM into the CD-ROM drive. The installer starts up automatically.
4. The Setup screen appears.
Click the [Installing FinePixViewer] button.



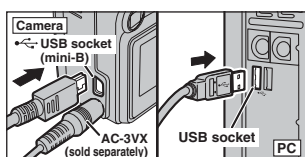
5. After installation completed, press [Restart] button.

B. Connect the Camera to your PC

1. Load an **xD-Picture Card** containing photographed images into your camera.
2. Set the "USB MODE" setting in the "SET-UP" menu to digital camera "PC" (Refer to "USING THE SET-UP SCREEN" in the owner's manual).



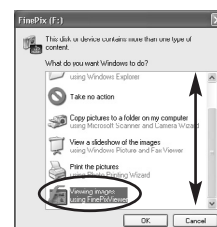
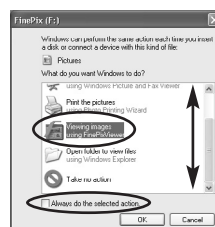
3. Turn your camera off.
4. If you have one, plug the AC power adapter connector into the "DC IN 3V" socket on the camera and then plug the adapter itself into the main power outlet, otherwise be sure your battery is fresh and charged.
5. Use the USB cable (mini-B) to connect the camera to your PC.



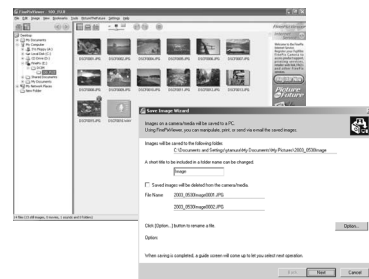
6. Turn the camera on.
7. Windows 98/98 SE/Me/2000 Professional
FinePixViewer starts up automatically.

Windows XP

- ① The "Found New Hardware" help message appears in the bottom-right corner of your screen. This message will close when the settings are completed. No action is required.
- ② Specify the settings in the "AutoPlay" dialog box.
- ③ Select "Viewing images using FinePixViewer" and then select the "Always do the selected action" checkbox.



- ④ Click the [OK] button to launch FinePixViewer.

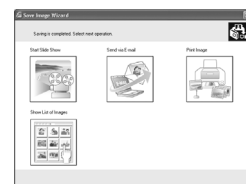


C. Save Images

1. The Save image Wizard starts up. Click the [NEXT] button.
2. Check that the files are downloaded from the camera to your PC and that a folder with the date is created.
Ex. \My Documents\My Pictures\2005_0224 Image

D. View Images

1. Click the [Show List of Images] button.



2. Select "Preview" in the View menu to display an enlarged image.

For more information

Refer to "How to use FinePixViewer" in the HELP menu, or chapter 5 and 6 in the Owner's Manual, or visit Fujifilm "Q&A Search" in the following website.

(<http://home.fujifilm.com/products/digital/>)

For Macintosh users, refer to chapter 5 and 6 in the Owner's Manual.